

# Postgraduate Diploma in International Logistics and Supply Chain Management

MS111A

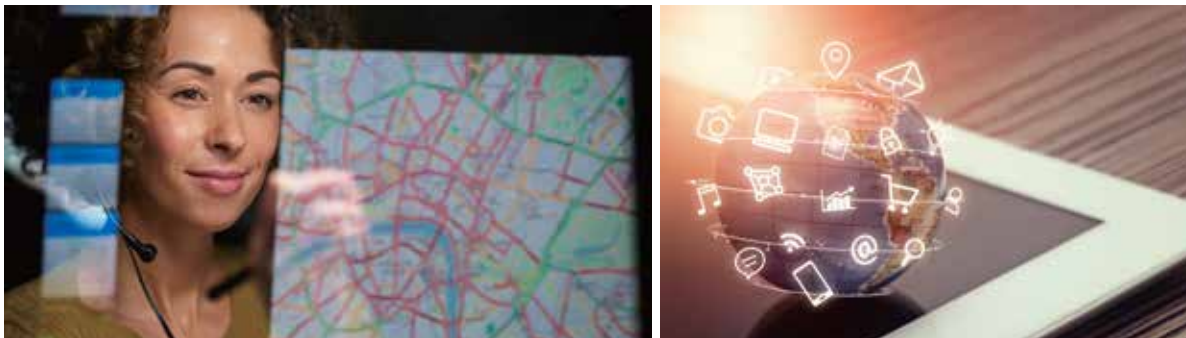
Supply Chain and Logistics Management



## About the Programme

This Programme aims to meet the continuing education and professional development needs of those who have considerable work experience in logistics and supply chain industries, or those who are interested to develop a career in these industries. The programme provides students with comprehensive understanding, knowledge and skills required for the business environment of international logistics and supply chain. It also aims to enhance the professional competence of students with knowledge and technical capability to deal with the current issues in international trade, logistics, e-commerce and procurement.

Graduates may apply for admission to the top-up Master programme in International Logistics and Supply Chain Management offered by the University of Plymouth, UK.



## Programme Structure

The programme consists of six modules, to be taught over 12 months.

Modules	Lecture Hours	QF Credits	HKQF Level
General Management and Current Issues for Supply Chain	51	21	6
International Trade, Procurement and Logistics	51	21	
Research and Information Management	54	18	
Operations and Strategy	51	21	
Global Supply Chain and Logistics Management	51	21	
e-Commerce and e-Logistics	54	18	
<b>Total</b>	<b>312</b>	<b>120</b>	<b>6</b>

## Mode of Delivery

- Part-time study mode
- Duration: 12 months
- Lecture Schedule: usually offers two sessions per week (weekday or Saturday)
- Three intakes per year

## Tuition Fee

**HK\$ 49,500** (In 3 instalments) (All fees are subject to change without prior notice.)

## Programme Features

- No thesis is required
- Focus on International Logistics and Supply Chain Management
- Have the opportunity to articulate to a prestigious top-up Master degree from University of Plymouth, U.K.



## Entry Requirements

### Applicants shall:

- a. hold a bachelor's degree or equivalent professional qualification(s) in a relevant discipline awarded by a recognised institution; **AND**
- b. have two years of full-time work experience in related industries.

If the degree or equivalent qualification is from an institution where the language of teaching and assessment is not English, applicants shall provide evidence of English proficiency, such as:

- i. an overall band of 6.0 in the IELTS (with minimum component scores of 5.5 in all four components: listening, reading, speaking and writing); or
- ii. an overall score of 90 or above in TOEFL iBT (with minimum component scores of listening 17, reading 18, speaking 20, writing 18); or
- iii. equivalent qualifications.

Applicants with other qualifications or mature students with substantial relevant professional and work experiences will be considered on a case-by-case basis.



## Postgraduate Diploma in International Logistics and Supply Chain Management

CEF  
Modules **6**

CEF  
Modules

Some modules of this course have been included in the list of reimbursable courses under the Continuing Education Fund

**6**

This course is recognised under the Qualification Framework (QF) level 6

QF Level: 6 QR Registration No.: 18/000529/L6 QR Registration Validity Period: 1/8/2018 - on-going

## Enquiries

Email: [pgdipilscm@hkuspace.hku.hk](mailto:pgdipilscm@hkuspace.hku.hk)

Tel: 2867 8480 / 2867 8393



Every effort has been made to ensure the contents of this brochure are correct at the time of printing. HKU SPACE reserves the right to update the contents of the brochure at any time without notice and this brochure does not form part of contract between the students and the School. Information in the HKU SPACE website is the most up-to-date version and supersedes the printed brochure, wherever applicable.

HKU SPACE is a non-profit making University company limited by guarantee.

